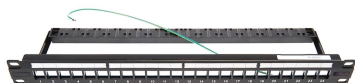


RJ45 Patch Panel, SL Series, STP, 24-port, black, unloaded



Product Classification

Regional Availability	EMEA
Portfolio	CommScope®
Product Type	RJ45 patch panel
Product Series	SL Series

General Specifications

Application	For use with SL Series outlets
Cable Type	Shielded
Color	Black
Growth Configuration	Unloaded
Interface, front	RJ45 jack
Panel Mounting	Flush
Panel Style	Straight
Rack Type	EIA 19 in
Rack Units	1
Termination Type	IDC
Total Ports, quantity	24

Dimensions

Height	44.45 mm 1.75 in
Width	482.6 mm 19 in

Material Specifications

Material Type	High-impact, flame retardant, thermoplastic Steel
----------------------	-----------------------------------------------------

2153437-1

Environmental Specifications

Operating Temperature -25 °C to +50 °C (-13 °F to +122 °F)

Packaging and Weights

Packaging Material Eco-friendly, Single-use Plastics-free

Packaging quantity 1

Packaging Type Bag | Box

Regulatory Compliance/Certifications

Agency

CHINA-ROHS

REACH-SVHC

ROHS

Classification

Below maximum concentration value

Compliant as per SVHC revision on www.commscope.com/ProductCompliance

Compliant

